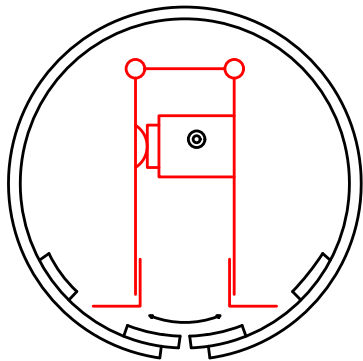


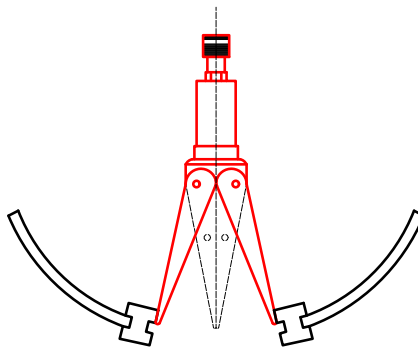
## ► Installation Scheme 1

Supplied with hydraulic cylinder and suitable for diameters DN185 to DN240



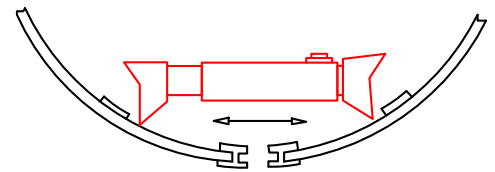
## ► Installation Scheme 2

Supplied with hydraulic cylinder and suitable for diameters DN240 to DN360



## ► Installation Scheme 3

Supplied with hydraulic cylinder and suitable for diameters above DN360



The pressing force that is required for the installation of internal seals depends on the following:

- Pipe diameter
- Pipe material
- Quality of the pipe surface (roughness, deviations from the cross-sectional shape, waviness etc)

Therefore, the following table values should be considered as guidelines.

Pipe internal diameter (mm)	Spreading Pressure Applied (bar)
400	220
600	250
800	280
1000	300
1200	320
1400	340
1600	360
1800	380
2000	390
2200	400

It is important that the spreading pressures in the table above are followed in order to ensure the seal withstands its maximum operating pressures of 20bar internal pressure and 2bar external pressure (dependant on seal configuration).